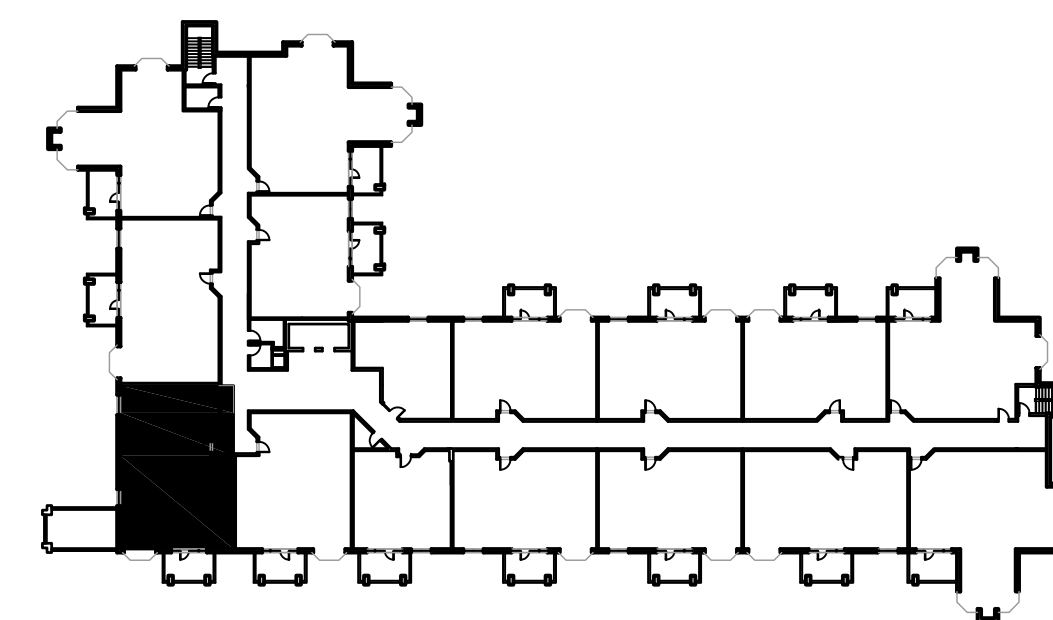


SAGE  
1,360 SQ. FT. (NET)



KEYPLAN (N.T.S.)



1121 Olive Executive Parkway, Ste. 100  
St. Louis, MO 63132  
P: (314) 533-2200  
F: (314) 533-2203  
www.etegra.com



The Willows  
AT BROOKING PARK

Chesterfield, MO

PHASE IV  
BUILDING 'A'

ST. ANDREW'S  
RESOURCES  
FOR SENIORS

Owner:  
6633 Delmar Boulevard  
St. Louis, Missouri 63130  
Tel: 314.726.0111

Floor:

- Garage
- 1st Floor
- 2nd Floor
- 3rd Floor

Drawing Scale:  
1/4" = 1'-0"

Date: 02-19-15

Unit Number:

**1110**

Unit Type:

SAGE

- TYPICAL UNIT PLAN
- CUSTOM UNIT PLAN